

PARISH MAGAZINE OF ST. OSWALD'S CROXLEY GREEN



APRIL & MAY
2026





WELCOME

Hello and welcome to the April/May edition of St. Oswald's magazine, and thanks to all who have contributed articles or write ups from events.
What's inside?

REGULAR ITEMS

PAGE 4	Mothers' Union
PAGE 8	In Memory
PAGE 12	Intercessions
PAGE 18	Diary Dates
PAGE 23	Parish Nurse
PAGE 24	Croxley Rambler
PAGE 31	Puzzles
PAGE 34	Puzzle Solutions
PAGE 35	Pastoral Contact Group
PAGE 36	Church Contacts

PLUS

PAGE 6	Christian Aid Arts Cafe
PAGE 7	Parish Project
PAGE 10	Olwyn Dunderdale in her own words (Continued on PAGE 20)
PAGE 17	Watford Schools Trust update
PAGE 28	Some Church History



Please send articles for the JUNE/JULY edition
of the magazine to
magazine@stoswaldschurch.org.uk
By 17th May Thank you

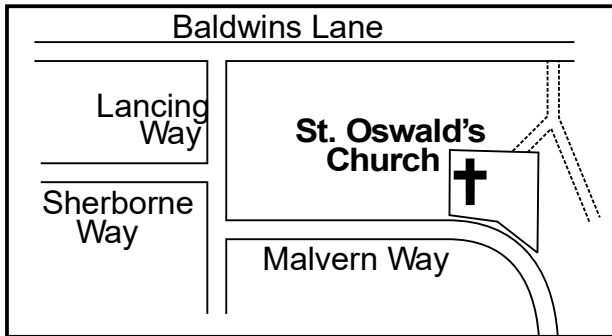
St. Oswald's Church - About us

We are part of the Church of England in the St. Alban's Diocese.

Our website is www.stoswaldschurch.org.uk

And on Facebook : StOswaldsCG

You will find us at 17 Malvern Way, WD3 3QL just off Baldwins Lane. There is a direct footpath link from Baldwins Lane into the rear of the church grounds and car park access from Malvern Way. The office entrance is at the back of the church hall.



Here for Christ, Community and Creation





MOTHERS' UNION FEBRUARY



We welcomed Pat, Sal and Susan, volunteers at Three Rivers Museum, to tell us about the Bunting - "Stitches In Time – A History of Three Rivers in 50 Stories". The idea came about by seeing the bunting the sewing group at Ascend (All Saints' Church, South Oxhey), made to celebrate the Platinum Jubilee marking 70 years of the reign of our late Queen. So began the ideas for a bunting to celebrate the 50th Anniversary in 2024 of the formation of Three Rivers District. There were 44 people involved in the making of the bunting helped by



Sian Fenwick, the Textile Artist who help ASCEND create their piece. This project took about 8 – 9 months from inception to completion, depicting various important places or events in this area. It has resulted in 50 pennants illustrating the history from Jurassic period, by way of the Domesday Book, the first and only English Pope, the coming of the Metropolitan Railway, right through to the opening of Warner Brothers Studios in Leavesden in 2012.

The pennants are all exactly the same size, shape and layout. A colour scheme was followed of Green, Maroon, Light Green Gold and Blue around the borders. The bunting really is a work of art displaying the creative and sewing skills to a very high standard depicting the various events in our history. If you get the chance to go and see it at The Museum it is well worth it. They have produced a book with a picture of each pennant and an explanation to the relevance of each one.

The Museum is open Wednesday, Thursday, and Friday 2 - 4 p.m. and Saturdays 10 – 2 p.m. and is well worth a visit. They are at Basing House in Rickmansworth, behind the Library and Watersmeet.

They are also trying to "tell the story of what it was like to live and work round here". If you have any information about life here please get in touch with the Museum to share your experiences. Janet



MOTHERS' UNION MARCH

Our talk this month was by Lin Welch on her career in Banking. Though there were many historical facts as to how Banking had changed from the mid 1960's Lin told us of many humorous situations. They related to some of the many managers she worked for, customers she met and events that occurred. We have not laughed so much for a long time. Lin has a fantastic memory for details and bringing situations to life. Lin rose up through the Banking system and became a manager herself. Thank you Lin for such an entertaining and amusing afternoon. We eagerly await Part 2 in our July meeting.

Janet Next Meeting 9th April - Rhonda and friend
talking about The Aquadrome

Christian Aid ARTS CAFÉ from 11.00 am

Saturday April 18th 2026 St. Oswald's Church

In the hall there will be watercolours, oil paintings, embroidery, textiles, cards, lace, jewellery, books and knitting with activities around our café offering homemade cakes. In the church will be displays by our local schools & artists, a programme of music from a recorder ensemble, classical pianists, flute with accordion, mandolin with guitar, saxophone with vocalists and a cello, violin and harpsichord trio.



Programme of music



11.00: *The Elderflowers recorder ensemble will be playing popular 20th century ballads & some tangos.*

11.40: *Alice (cello), Stephen (violin/guitar) and Niamh (piano/ harpsichord) will play some early and classical music, finishing with a tango or two.*

12.20: *Derek will play the vibraphone and a mix of piano music across the centuries, some familiar, some perhaps less so.*

13.00: *Stuart, Rob and Steven will take us from classical to rag to jazz, on mandolin, mandola and guitar*

13.40: *Wind in the Bellows is Simon Peachey and David Silver. They will be performing a truly eclectic mix of folk music from around the world, arranged for flute and accordion.*

14.20: *Stuart will be on saxophone with a range of well-known tunes with vocals, including Fly Me to the Moon, Blue Moon and Wonderful World.*

15.00: *To end, Natalia will play a series of relaxing Preludes by Claude Debussy, including The Girl with the Flaxen Hair.*





ST. OSWALD'S PARISH PROJECT 2026



RENEWAL OF THE KITCHEN IN THE CHURCH HALL

Normally, St. Oswald's would choose a charity to support through fund raising during the year. This year, it's a bit different, as the money raised will go towards renewing the kitchen in the church hall. Why? The hall is used by many organisations, and the revenue from it forms an important addition to our funds. The time has come to update the kitchen, so that there are good facilities available for hall users.

TARGET FOR FUND RAISING is £25,000 to £30,000
Currently there is £10,000 in the fund

Other than St. Oswald's groups, who are the hall users?

They include :-

Rainbows, Brownies and Guides

Kumon - which provides tuition in English and maths

Childminders group

Hartbeeps - sensory development classes for babies & toddlers

National Childbirth Trust

Zumba,

Vision2Dance,

Pilates fitness classes

Various groups from the University of the 3rd Age (U3A)

Watford Community Orchestra

Children's parties

***Groups that use the hall are being asked
what sort of facilities they would like to
see included in the design.***



**HA!HA!HA! What is the difference
between a cat and a comma? One has
claws at the end of its paws, the other
is a pause at the end of a clause!**



IN MEMORY
APRIL

*John HAMBLYN ~ 17th Jan 1938
to 1st April 1998*

*Bessie TUCK ~ 15th Aug 1906
to 3rd April 2002*

*Raymond John CHALKLEY ~ 13th November
1931 to 3rd April 2019*

*Bernard RUMMERY ~ 13th March 1932
to 5th April 2024*

*George Edward CULLEN ~ 9th May 1921
to 8th April 1978*

*Ann Elizabeth WALTON ~ 14th May 1933
to 11th April 2013*

*Muriel Christine Edith CHURCHILL ~ 27th Dec
1915 to 19th April 2006*

*Stanley John CHILD ~ 18th Nov 1905
to 12th April 1989*

*Sidney James MADGWICK ~ 11th Sep 1904
to 12th April 1989*

*Marion Rose PARR ~ 15th March 1946
to 14th April 1984*

*Mary BISHOP ~ 23rd Aug 1926
to 25th April 1998*

*Robert Stephen WILSON ~ 9th April 1940
to 29th April 2018*

*John EDWARDS ~ 2nd Feb 1951
to 12th April 2017*

MAY

Doreen BARNES ~ 30th Apr 1922
to 2nd May 2015

Peter GIBBENS ~ 25th Sep 1927
to 6th May 2012

Richard SMITH ~ 14th March 1913
to 6th May 1994

Gladys Patricia BALDWIN ~ 17th March 1903
to 8th May 1990

Martin STRANZ ~ 5th Sep 1890
to 13th May 1976

Norman Roy SCOTT ~ 6th May 1931
to 15th May 1994

Courtenay George TILLEY ~ 18th Sep 1945
to 16th May 2006

Harry Leonard CURNOW ~ 18th March 1930
to 16th May 2014

Francis George William WOODHOUSE ~
5th June 1920 to 18th May 2013

John Graham THOMSON ~ 12th Feb 1913
to 30th May 1998



*“I am the resurrection
and the life. The one who
believes in me will live,
even though they die.”
John 11:25*



Recently, St. Oswald's said "Goodbye" to Olwyn Dunderdale, who was well known and had been coming to the church for many, many years. Over the years, Olwyn was involved with lots of church groups such as Chanticleers, Girl Guides, Cafe O, Flower Arranging and Mothers' Union to name but a few. Before she died, Olwyn had written about her life and memories. The following is a copy of

OLWYN - IN HER OWN WORDS ... (part 1)



THE EARLY YEARS



I was born in Manchester April 14th 1934. I started school in 1939, after war was declared all primary schools were evacuated to Derbyshire. The children were taken by buses and groups were spread around the villages.

I was sent to Blackpool to stay with some distant relatives, the schools were full so I was squeezed into separate schools for morning and afternoon classes. After being taken to the first school and having lunch there, I was supposed to walk to the other school. As I did not know anyone and it was packed with older children, I did not like it. I decided to walk about and remembered sitting on a garden wall talking to a big grey parrot that was put in its cage on sunny days. Eventually, this was noticed and I was taken back to the relatives who were looking after me. After this, I was then again returned to Manchester to be with Joan and my parents.

Shortly after I was evacuated to Leek on the Staffordshire border, an older couple picked me up as they had no children. It was a quiet home. They were kind but I did not understand why I was there by myself.

My mother came twice to visit me, but travel was very difficult as all buses and trains were needed to move the military. I watched my mother go down the hill to the station and after a few days, I decided to do the same. A local policeman eventually found me on the station platform with my small suitcase and gas mask.

After this, I was sent back to Manchester where I met up with my sister, Joan, who was then 4 ½ and I was 6 ½.

Air strikes were still common during this time, known as the Blitz, and we sheltered under a tunnel made by tipping the settee on its front with two armchairs to support it.

It was now 1941 and my sister who had now reached school age, had been sent to live with our grandmother in St. Anne's. My grandmother agreed to take me on as well. She was strict but fair and a good cook, especially with the tiny amount of fat and meat that we were rationed each week. All of the local children had jobs. Ours were looking after the vegetable plot. Once we had picked and prepared the vegetables for cooking, we took the outside leaves to our neighbours who kept hens. In return, we were given eggs. We always hoped that our neighbour had collected the eggs already as we hated going into the hen house to find them, there was a lot of bartering in those days.

Once our jobs and school were finished, we were allowed to wander freely and joined a girl gang, which was organised by the older girls in the neighbourhood who were around 12-13 years old. Their job was to take all of the younger brothers and sisters with them and even sometimes babies in their prams, which Joan and I enjoyed, as it was easier than having to carry them.

On our rambles, we were expected to pick various fruits including plums, crab apples, blueberries and black currants. Rose hips were gathered to make rose hip syrup for the babies as of course they were getting no oranges, so were lacking in vitamin C.

Sometimes on the golf course horses and cows would graze and we would tend to find mushrooms. This golf course eventually became the Royal Lytham St. Anne's golf links. The older boys were often taken to the back of the course to pick up larger crops.

Our grandmother had a spare bedroom in the house and would often take in lodgers. There were hundreds of civil servants transferred to Lytham St. Anne's, who worked in the ministry of agriculture and fisheries. We had a beautiful Jewish girl Pauline who stayed with us, who fell in love with a polish airman; Joan and I found it so romantic. We had a lot of service people in the area because of all the accommodation in the hotels. We then had a missionary wife and son to stay. Her husband was detained in South Africa. We were terrified of this boy who was only 3 ½, but nobody would believe how often he hit us with anything that he could find. (continued on page 20)



INTERCESSIONS



The following suggestions for prayer week by week are by no means exhaustive. They are intended as prompts to encourage our prayers for: the life of our church; the charities with which we are connected; the roads of our parish; the village and the wider community.

Sunday 29 March to Saturday 4 April

Our Mission Action Plan
Bible Reading Fellowship
Claremont Crescent, Lancing Way, Winton Crescent,
Winton Drive
Churches Together in Croxley Green

Sunday 5 to Saturday 11 April

Choir and church musicians
Church Mission Society
Dulwich Way, Lincoln Drive, Lincoln Way,
Little Green Lane
Our local doctors' surgery



Sunday 12 to Saturday 18 April

Safeguarding Team and Pastoral Contact Group
New Hope Trust
Baldwins Lane, Kenilworth Drive, Manor Way,
Rochester Way
Dame Sarah Mullally, the Archbishop of Canterbury,
the Church of England and the Anglican Communion.

Sunday 19 to Saturday 25 April

Uniformed organisations – Rainbows, Brownies and Guides
Trinity Project
Durrants Drive, Hastings Way, Lewes Way, Norwich Way
The King and Royal Family

Sunday 26 April to Saturday 2 May

Parish Magazine
Croxley Parish Nurse
Merchant Taylors Place, Appleby Drive, Gloucester Court,
Hertford Close, Pevensey Way, St Mawes Close,
Scarborough Drive, Scotney Close
Parish, District and County Councillors

Sunday 3 to Saturday 9 May

Churchwardens, Treasurer and PCC

Christian Aid

Dover Way, Ludlow Way, Richmond Way, Warwick Way

Our Diocesan Bishops, Alan, Richard and Jane

Sunday 10 to Saturday 16 May

Baptism preparation and follow-up

The Children's Society

Dorrofield Close, Hazelwood Road, Mayfare,

Sansome Close, Watford Road

Our local schools

Sunday 17 to Saturday 23 May

Revd Ritah Namakula, our new Vicar

USPG

Beechcroft Ave, Oakleigh Drive, Sycamore App,

Sycamore Road, Valley Walk

All Saints' Church

Sunday 24 to Saturday 30 May

Café O

Watford and Three Rivers Refugee Partnership

Byewaters, Evensyde, Basildon Close, Gill Close,

Heckford Close, Longmans Close

Parliament and our MP Gagan Mohindra

Sunday 31 May to Sat 6 June

Prayer Fellowship

A Rocha

Girton Way, Malvern Way, Sherborne Way, Winchester Way

Shaftesbury Court

**Please remember our 10%
giving recipients in your prayers:-**

USPG, CMS, ASCEND

Christian Solidarity Worldwide,

Church Army Marylebone Project,

Alternatives Newham,

Watford Schools Trust and A Rocha



THE KITCHEN

CAKES FOR ALL OCCASIONS

CROXLEY

**AT THE KITCHEN, WE BAKE BEAUTIFUL
CAKES AND CUPCAKES
USING FAIRLY TRADED INGREDIENTS**

**WE CATER FOR BIRTHDAYS, WEDDINGS,
CHRISTENINGS AND ALL OTHER
CELEBRATIONS**

**WE WOULD LOVE TO DESIGN A CAKE
TO SUIT YOUR OCCASION AND BUDGET**

FIND US:

198 WATFORD ROAD, CROXLEY GREEN

WEB: WWW.THEKITCHENCROXLEY.COM

TWITTER: [@KITCHENCROXLEY](https://twitter.com/KITCHENCROXLEY)

PHONE: 07912 847295

EASTER MORNING

Early on that morning Your friends
were full of gloom,
And slowly trudged towards the
closely guarded tomb,
Sealed by a rock, that no man
could move away
Telling all the world that You,
as a mortal, lay.
Enshrouded in white linen,
cloths wrapped tight
Resembling Your swaddling as a babe
on Christmas night.

Mary, though, met You in the
garden walking.
Oh what joy! What confusion, to hear
You once more talking.
Risen Lord Jesus, speak to us today
as never before,
Nurture us, refresh, and over us
please pour
In flowing streams, Your living waters
that will revive
Neglected spiritual gardens,
make us feel alive.
Gentle Jesus, three days ago You bore
the scorn and shame so that we,
here, now, can praise
Your Holy Name. *Amen*



By Alison Lee

HOMOEOPATHY



Lynn Williamson
Homoeopath

L.C.P.H. M.C.P.H. A.R.H.

01923 442759

Let your body follow its natural healing path
through use of this holistic system of treatment.

The Osteopathic House Experienced Qualified Practitioners

**OSTEOPATHY, ACUPUNCTURE,
CRANIAL OSTEOPATHY, HOMEOPATHY, HEAD MASSAGE
MASSAGE THERAPIES, REFLEXOLOGY, SPORTS MASSAGE,
ADULT COUNSELLING, CHILDREN COUNSELLING,
GIFT VOUCHERS AVAILABLE**

BUPA and PPP recognised specialist clinic.
Philip Aarons B.Sc (Ost) DHMSA MICO & Associates
Principal Practitioner @ The Osteopathic House

YOU ALWAYS FEEL FINE WHEN YOUR SPINE IS IN LINE
www.theosteopathichouse.com

**The Osteopathic House, 38 Church Street
Rickmansworth, Herts, WD3 1DJ tel. 01923 896655**

WATFORD SCHOOLS TRUST

Watford Schools Trust is one of the charities that St. Oswald's supports. The aim of the trust is to "Give every school child a clear understanding of the Christian faith." Volunteer workers go in to local schools to do assemblies and give some lessons, visiting over 50 schools in the area. They also run "ExploRE" events in schools, designed to help children (of all faiths and none) to explore spirituality, their own thoughts about God, themselves and their wonderful world in a safe environment. Over the course of a week, many activities are provided and all the children are invited to try them.

This is an extract from their latest newsletter :-

"We are continuing to see God move through our work as a Trust, as we partner with schools in the Watford area to share the Christian faith. From our classroom lessons and assemblies to our 'ExploRE' prayer spaces, we are witnessing a tangible impact on the spiritual input on the schoolchildren in our local communities.

As we continue our mission to ensure every child has a clear understanding of the Gospel, we are encouraged by growing relationships and new connections that are being made with churches and schools in our area. We invite you to join us in praising God for these open doors and for the dedicated team that makes this ministry possible. Pray for our trustees and staff, and those that give up their time to volunteer at our events, that we are energised and hope-filled as we press ahead, seeking God's purpose and plan for those we serve."

As well as monetary donations, Watford Schools Trust ask our prayers for :-

The children who are hearing the Easter message this term

The workers as they take the lessons

A new Chair of the Trustees

The workers as they plan for lessons in the Summer Term including the lessons with Year 6 about moving on to secondary school.



Thank You



SOME DATES FOR YOUR DIARY

APRIL

Friday 3rd - Good Friday

Easter Sunday - 5th 8.00am Holy Communion

9.00am Easter Breakfast in the hall

10.00am Easter All Age Family Communion

Thursday 9th - 2.30 pm Mother's Union -

"The Aquadrome"

Friday 10th - 3.30 pm Donut Club

5.15 pm Hotdog Club

(NB changed from first Friday due to Easter)

Saturday 11th - 7.45 am Men's Breakfast -

"A Voyage around My Father"

Saturday 18th 11.00 am - 4.00 pm

Christian Aid "ARTS CAFÉ" - *more*

information elsewhere in the magazine

Sunday 19th - 10.00 am Spotlight service

Sunday 26th - Annual Parochial Church Meeting

MAY

Friday 1st - 3.30 pm Donut Club

5.15 pm Hotdog Club

Sunday 3rd - 10.00 am Family Service

Thursday 14th - 2.30 pm Mothers' Union -

Stephen Martin - "Guitars and Songs"

Saturday 16th - 7.45 am Men's Breakfast

Sunday 17th - 10.00am Spotlight Service

Wednesday 20th - 7.00 pm Licensing of

Rev'd Ritah Namakula



JUNE



Friday 5th - 3.30 pm Donut Club
5.15 pm Hotdog Club
Sunday 7th - 10.00 am Family Service
Thursday 11th - 2.30 pm Mothers' Union -
Celebrating 80 years of MU in Croxley Green
Saturday 20th - 7.45 am men's Breakfast -
Guy Parks - "The Emerald Isle"
Saturday 20th Café O at CROXLEY REVELS
Sunday 21st - 10.00 am Spotlight service

FUTURE DATES:- Thursday July 2nd - Summer Concert
by the Community Choir at St. Oswald's Church (this is a
fundraiser for us too)

ST. OSWALD'S HOLIDAY CLUB

"DON'T SNOOZE - READ THE GOOD NEWS"

Monday 27th July - Wednesday 29th July

This year we are hoping to invite 60 children to attend.
As some of our long-standing group leaders are having a
well earned rest, we are prayerfully asking if you could give
an early commitment to leading a small group for the 2½
days.

Training and support will be in abundance.

DBS clearance will be needed.

Helper and children's application forms will be available
in April.

Please contact Vanessa Mackay vanessa.mackay1@nhs.net
or Anne-Georgina Barnes warden2@stoswaldschurch.org.uk
for more details.



(Continued from page 11) At the age of ten, I was sent to Manchester by myself to take a scholarship. I passed but as my mother was still living in Manchester it was not transferable. So I was sent to a small private school and my sister came as well. We learnt very little as schools were not registered or inspected at that time. We did a lot of sport and singing and gave a performance of Gilbert and Sullivan operettas at the end of term. In later life, I actually believed this school was the model for St. Trinian's and quite a few of

the girls became famous in the acting and entertainment world.

In 1948 our mother developed cancer and it was decided to take me out of school to help my mother in her shop, I did not mind at all. When my mother was better Joan joined me and we went to Commercial College for short hand and typing, this was my 7th school. My mother's health returned and we all decided it was time to sell up and leave Manchester. We moved back to St. Anne's with my grandmother, who was getting older and had a huge house. I worked at Martin's bank in Blackpool.



EARLY MARRIAGE



I met David in 1956 through friends at church, who worked in the civil service in St. Anne's. We met on a blind date dancing at the Blackpool Tower.

By then our grandmother had died and also our mother and David was transferred to Barrow in Furness. After months of him travelling and seeing each other at weekends, we decided to get married. It was always a joke that he married me, because he knew I could cook and look after the household.

We lived in a little village called Dalton in Furness and so began my life long love affairs with the Lake District. During this time, it is important to note we met our very good friends Norma and Denis Baylif.

I worked full time in Martin's bank for a year and then went to work for a local auctioneer and estate agent. It was an exciting and interesting job. We had auctions once a month in all of the south lakes villages. The auctioneer was a bit mad, he had been a very young Battle of Britain pilot and he drove through the countryside as if he was flying a spitfire!

We walked all over the fells in the South Lakes and Dudden Valley.



STARTING A FAMILY



Ian was born in 1961 and survived a freezing cold winter with frost on the inside of the windows and no running water for days. David was then transferred to the Stockport office and we moved to Cheadle Hume, setting up our home and making our first garden.

In 1964, Andrew was born and quickly became part of a group of children who were part of a preschool group that the mums (including me) formed for our local church.

We didn't stay long in Cheadle Hume before David was transferred again to London in 1968. So each Monday morning we would walk down the fields to the railway line and wave and wave to David on his way down to London (shades of the railway children).

And so we came to Croxley Green. Ian started school at York Road and transferred to Harvey Road and was joined by Andrew. We very soon took on an allotment and joined the Horticultural and Allotment Society. We made good friends and were soon involved with the running of the society. We had many very enjoyable days out with the society visiting all the great gardens in the southeast. We took part in organising the annual show that had been held at Durance School. Then at St. Oswald's hall and now York Meade. The society had a stall up at the Revels for many years.



THE GARDEN



After our sons left for university, Ian went to Sheffield for Geology and Andrew to Portsmouth and France for Engineering.

We then turned our bottom lawn into a vegetable plot and we both had more time to create a garden from the football pitch and cycle track enjoyed by our sons and their friends. We entered the horticultural show over many years with cake, pies and David made jams and pickles and was renowned for the strength of his pickled onions! A few of our family members are quoted saying “they bite back!”

*Thanks to Olwyn's family
for permission to use this.*



CROXLEY GREEN PARISH NURSE

Parish Nursing is an established mechanism by which Christians have demonstrated the love of Jesus by providing holistic care to people in need, regardless of background.

Parish Nurses work with people of all ages and backgrounds, with any faith or none, focusing on the person rather than just a medical condition and integrating all the different aspects of health. A Parish Nurse can:

- provide moral support;
- give general health advice and education;
- 'signpost' people to other support or medical services;
- pray for people;
- clarify medical procedures or issues; and
- simply listen (which they do an awful lot of!).



Cathy Scarborough 07562 515791
croxleyparishnurseecathy@gmail.com



ALLELUIA! THE LORD IS

Risen Lord Jesus

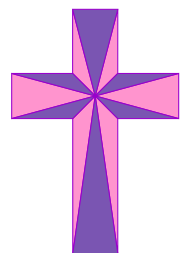
Inspire us to be as

Servants to our fellow human beings

Eager to respond to their need.

Nothing is impossible to You!

Alison Lee



A CROXLEY RAMBLER'S DIARY

Spring has arrived in the Chess valley:

It was another beautiful spring morning - blue sky and a slight chill in the air as we left Church End, Sarratt. We descended towards Sarratt Mill, past blackthorn florets gleaming white in the hedge. Reaching the bottom we turned upstream along the Chess Valley footpath. While many trees retain their winter starkness, a weeping willow on the opposite bank glowed yellow-green as the leaves emerge. Looking back up the hill, the terraced steps in the landscape were clear to see in the field below Goldingtons. Last year's archaeological dig had established that they date from the middle ages, not Roman times as previously thought. The legacy of heavy rains in February remains in a waterlogged strip beside the stream, although we found that most of the footpaths on our walk were generally less sticky than I expected.



Crossing the footbridge at Sarratt Bottom we looked for signs of life in the water but didn't notice anything. Thames Water say they are investing in improving the sewage works. Perhaps one day the Chess will be a decent chalk stream for wildlife again.

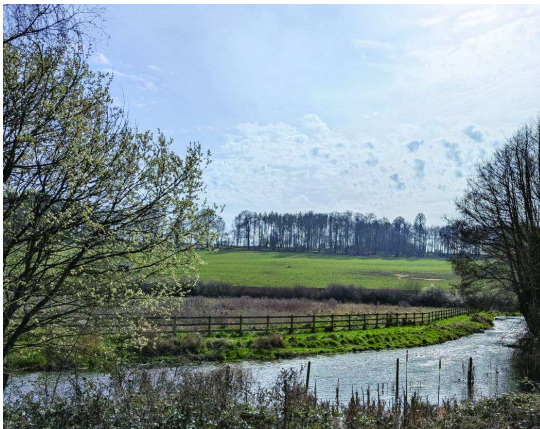
We followed the Hertfordshire Way up the slope through Turveylane wood. I heard my first chiffchaff of the year. Perhaps the recent southerly breezes had helped its long flight from Africa. The ground beneath the trees is carpeted in green celandine leaves with the occasional yellow starlike flower. Crossing a wheat field and through another small wood we reached the road into Chenies. Here, the brick cottages with tall chimneys built by the Bedford estate make an attractive entrance to the village.



We crossed onto the path beside the cricket ground which joins the Amersham road. Here we took the entrance drive to Chenies Manor and briefly continued beyond Greathouse farm. There is a typically gentle Chiltern view over the valley towards Latimer village - calm horses in the foreground field and distant woods on the

skyline. From here we retraced our steps into the woodland below the manor house garden and down to the old water mill in Chenies Bottom.

The stream ran swiftly under the road bridge. The old farm has a pleasant garden next to the water with a lovely pink cherry tree in flower. It looked idyllic but there was a muddy mark on the roadside wall about three feet deep - presumably the result of earlier flooding which must have affected the house.



We took the valley footpath heading back towards Sarratt. It runs beside the old water meadows and through Frogmore nature reserve. The Wildlife Trust has been improving the path in its muddiest parts using a boardwalk made of plastic waste. Some bluebells were in full bloom in a small wood beside the meadow. A bit further on

there is a small viewing space where you can look at the river. Today the sun reflected brilliantly from the shining wavelets. A young woman was taking advantage of the space to calm her five dogs after their exertions chasing rabbits.

We took another look at the stream at the ford next to the old watercress farm. It is sad it no longer operates but the problems of poor water quality and the labour-intensive work must have been too much. We followed the road along Sarratt Bottom and took the footpath up the slope which proved a bit more of an effort than it should have been. Happily a fallen tree provided a welcome place to stop and look at the view. This is not spectacular landscape but the gentle curves of the hills and muted greens and browns are both calming and satisfying.



So it was time to walk to the church and enjoy lunch in the sunshine outside the pub while a nuthatch called from the hedgerow.

Brian Thomson

Café O at St. Oswald's Church

THE PLACE TO START THE WEEK!

Mondays 9.00 - 12.00

Please visit us for

Tea Coffee Hot Chocolate

Home Made Cakes

and a very warm welcome



**No charges,
just a donation**



JAMES PEDDLE LTD

INDEPENDENT FUNERAL
DIRECTORS

James Peddle is still
independently owned and
managed.

They pride themselves on giving a
caring and understanding
24 hour personal service.

Home arrangements by
appointment.

Golden Charter Pre-payment
Plans.

Probate Advisory Service.

10 Moneyhill Parade
Uxbridge Road
Rickmansworth
HERTS WD3 2BE
01923 772013

172 New Road
Croxley Green
Rickmansworth
HERTS WD3 3HD
01923 775013

51 Lower Road
Chorleywood
HERTS WD3 5LG
01923 286102

SOME CHURCH HISTORY

While research was being done for information about some of the church's kneelers, the following article came to light about the keys on the wall at the back of the church:-

My kneelers were made in memory of my parents, Joan and Tom Johnson. We (including, my brother Ian) lived in Claremont Crescent in the 50s and 60s. We were all very involved in Church activities. Dad was a member of the Men's Society and Adult Fellowship and Mum of the Young Wives and Mother's Union.

Dad was also involved with any amateur dramatics going on in Croxley at the time. They were both in many of the Gang Shows and involved with fetes, jumble sales, New Years Eve Dances and other social events. In the early 1960s mum was also Akela to the Cub Pack. St Oswald's was the focus for much of our social life, along with the Hughes, Wells, Nanson, Bishop and Murfet families.

On the wall to the right of the Baptistry arch, above the bookcase, is a small glass-fronted display case containing three keys. The middle biggest one is silver, set with an amethyst, (sketch 1) and was made to commemorate the formal opening of the Church Hall by the Bishop of St. Albans in January 1961, after a confirmation service conducted by him.

Having a separate hall paved the way for the consecration of the Church, and this took place in 1962: the bottom key is gold, (sketch 2) and was made for that occasion. The miniature at the top (which seems to include elements of both the others) (sketch 3) was presented as a memento to Bishop Basil Guy who conducted the consecration service.



After his death his widow returned the miniature to us and the box for the three keys was made. Both the Hall and Church keys actually worked (although the hall lock has changed over the years). All three keys were made by a talented member of the congregation, the late Tom Johnson, a

Hatton Garden jeweller. I am very proud that my Dad made the ceremonial keys that are displayed in the church.

Written by Ann Lock (2025)



Joan Johnson
13th December 1923
to
2nd August 1965

Tom Johnson
26th October 1921
to
2nd March 1980



PRAYER

In these days of uncertainty about all the wars, this is a prayer for the Middle East from The Church of England website, but would be just as apt for any of the ongoing conflicts in the world:-

God of mercy, look with compassion on all who are affected by the present conflict. Grant insight to hardened hearts, comfort to the fearful, protection to those in danger, and hope to those who are despairing, through Jesus Christ our Lord. Amen.

Also rather apt, St. Alban is not only the patron saint of converts but also of refugees and torture victims.

HA! HA! HA!

*How does an eskimo build his house?
Igloos it together*

How do you know that the
ocean is friendly? It waves!!

In order to have a “Murder of Crows”
there must be probable caws!!

What do you get when you combine an
elephant with a fish? Swimming trunks!!

What do you call a snowman in July?
A puddle!!

By the way, I thought you’d like to know that I tried
to steal spaghetti from a shop, but the female guard
saw me and I couldn’t get pasta!!



HAND MADE CARDS

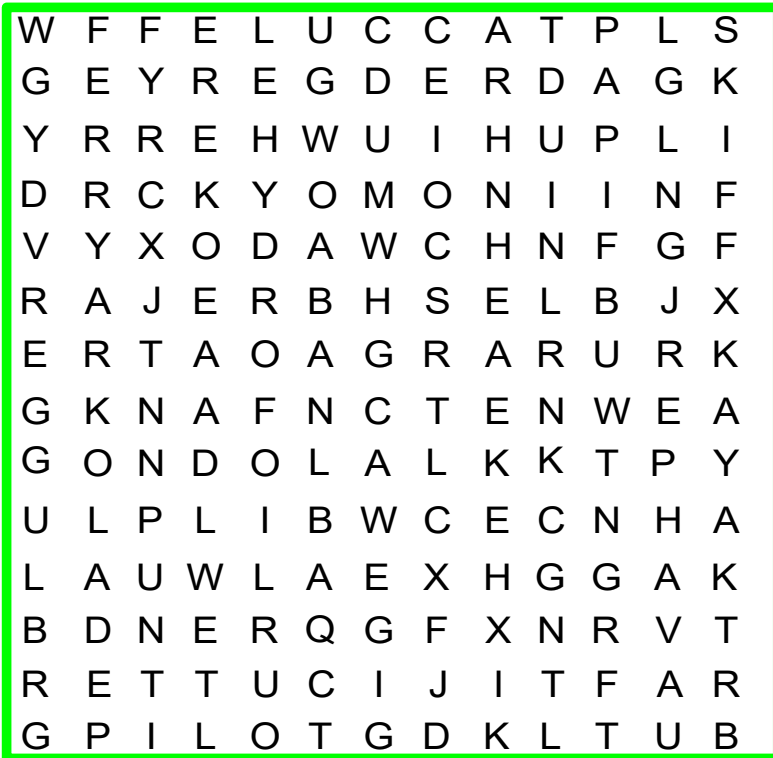
**Cards for all occasions
At the back of the church
Hand made by members
of St. Oswald’s
Please leave a donation
Thank you**



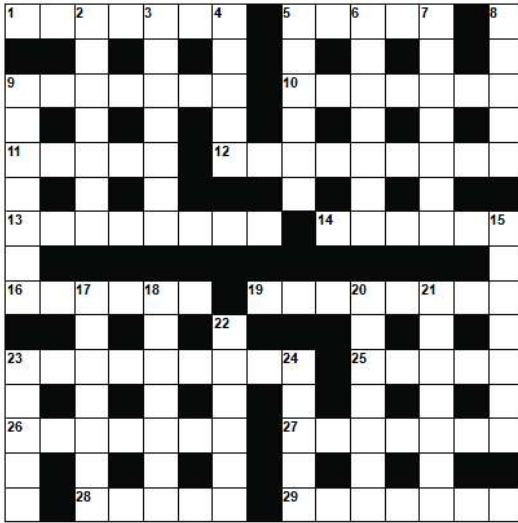
PUZZLE PAGES

WORDSEARCH

There are 32 words in the grid, all types of water craft - not all the letters will be used.



- | | | |
|---------|------------|----------|
| ARK | GONDOLA | PEDALO |
| BARGE | HYDROFOIL | PILOT |
| CANOE | INFLATABLE | PUNT |
| CORACLE | JUNK | RAFT |
| CUTTER | KAYAK | SKIFF |
| DHOW | KETCH | TANKER |
| DINGHY | LAUNCH | TRAWLER |
| DREDGER | LIFEBOAT | TRIMARAN |
| FELUCCA | LINER | TUB |
| FERRY | LONGSHIP | WHERRY |
| GIG | LUGGER | |



**CRYPTIC
CROSSWORD BY
RICHARD LEE**

- 27 I barged round an organised unit (7)
 28 Finished up in a garden dedicated to scented flowers (5)
 29 Expanded dells we change a little (7)

DOWN

- 2 Drink fortified wine to prevent collapse (7)
 3 Sausage can be used to relieve hunger (7)
 4 Bush of greater age (5)

ACROSS

- 1 Heavy outpouring like a scoundrel in a box (7)
 5 Look through surreptitiously for a firearm (5)
 9 Old partner stood as a model and was brought to public notice (7)
 10 Citadel was altered in a manner of speaking (7)
 11 Fragrance from a rose or mountain ash initially (5)
 12 Relic once smashed to bring back together (9)
 13 When all's said and done then dine somehow (2,3,3)
 14 Airborne journey, loud with little weight (6)
 16 Dozens ignored when displaying a flag (6)
 19 Progressive having moved forward (8)
 23 Put a man off with cleaning material (9)
 25 Freight to make vehicle move perhaps (5)
 26 Length of time to draw out (7)

- 5 Cured in a way that has easy start to cut back (6)
 6 Soft material when the man comes back to the tart (7)
 7 Making more level at the end of the day (7)
 8 Corner joint worn by the bishop (5)
 9 Save up and I've become elusive (7)
 15 Old peat produced a baby amphibian (7)
 17 Liberate part of the tennis match at no cost (3, 4)
 18 Spun quickly when tragedy broke (7)
 20 Historical collection which houses a curved structure I visited extensively initially (7)
 21 Mongrel appendage cut short (7)
 22 Do them differently in a system of working (6)
 23 New type of study covered in fine particles (5)
 24 Container has two ways to create hollow cylinders (5)

TATAMI PUZZLE

		1			1	4	
	2						2
4				2			
			4				
	3						1
				4	2		
2							
			1				4

Each 8x8 grid is filled with sixteen 4x1 blocks fitted together to form a square. The four cells of each block contain, randomly, one each of the numbers 1 to 4. No two similar numbers can touch horizontally or vertically and each row and column must have just two of each of the numbers. Some numbers are given to get you started. Can you place the rest?"

SUDOKU X

In the Sudoku X square each row, column, individual 3x2 box and the two main diagonals all contain one each of the numbers 1 to 6.

The puzzle, just like an ordinary Sudoku, is to work out, using the numbers given, where the rest fit in!

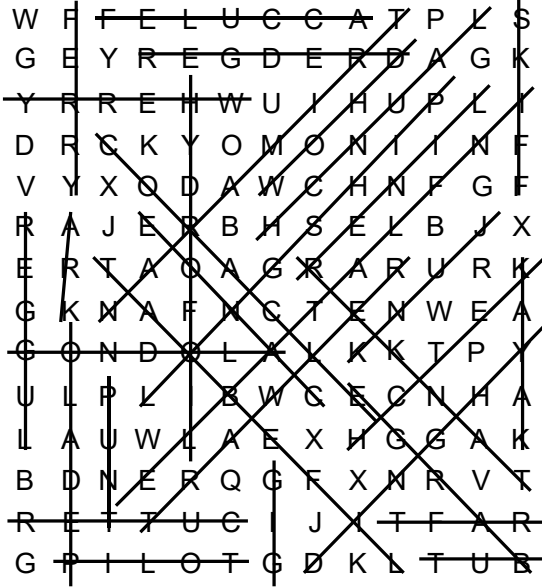
	4		1		
				4	3
			6		
					5



Did You Know - Cryptic crosswords were pioneered in the 1920s by British poet and translator Edward Powys Mathers (1892–1939), who published puzzles in The Observer under the pseudonym "Torquemada". Starting around 1925–1926, his puzzles introduced the standard for fully cryptic, "fiendishly" difficult clues over standard definition-based puzzles.

ANSWERS

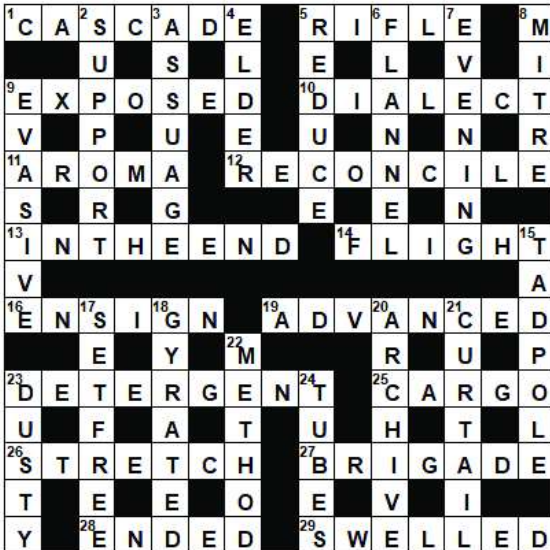
WORDSEARCH



TATAMI PUZZLE

2	3	1	2	4	1	4	3
3	2	3	4	1	4	1	2
4	1	4	3	2	3	2	1
1	2	1	4	3	2	3	4
4	3	2	1	2	4	1	3
1	4	3	2	4	2	3	1
2	1	4	3	1	3	4	2
3	4	2	1	3	1	2	4

CRYPTIC CROSSWORD



SUDOKU X

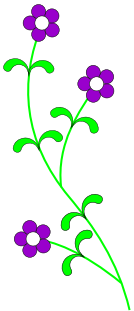
3	4	2	1	5	6
1	6	5	4	3	2
2	3	4	5	6	1
6	5	1	2	4	3
5	2	3	6	1	4
4	1	6	3	2	5



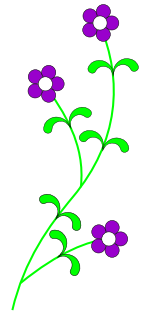
PASTORAL CONTACT GROUP



Pastoral Contact Group: Formerly led by the vicar; this group aims to ensure contact is maintained with anyone who finds it difficult to get to church, for whatever reason. Where appropriate, arrangements can be made for a lift to church, or for a home visit with the possibility of Communion at home. If you become aware of anyone who you think the group could make contact with, then please speak to
 Tony Barton tony.barton@stoswaldschurch.org
 07803 608230,
 Gill Thomson - gillthomson48@gmail.com
 Pat Phillips or Sue Barton.



PAUSE FOR THOUGHT
*Can't clean a whole room?
 Clean a corner of it
 Can't do all the dishes?
 Do a dish
 Can't get in the shower?
 Wash your face*



*Always look for the thing you CAN do
 with the energy and focus you DO have.
 Little wins pave the way for bigger wins*



CHURCH CONTACTS



Church phone number: 07359529452

Lay Readers:

Tony Barton tel:01923 897256

email: tony.barton@stoswaldschurch.org.uk:

Magdalena Pletsch

email: magdalena.pletsch@stoswaldschurch.org.uk

Church Wardens:

Helen McAlpine email: hccmcalpine@gmail.com

Anne Georgina Barnes 01923 897875

email: warden2@stoswaldschurch.org.uk

Treasurer: Karen Pryse

email: karen.pryse@stoswaldschurch.org.uk

PCC Secretary: Brian Thomson

email: secretary@stoswaldschurch.org.uk

Hall Bookings: email: hall-bookings@stoswaldschurch.org.uk

Magazine distribution: Hilary Broadbent

email: broadbenth@googlemail.com Mobile: 07751 879541

Lay Leader of Worship: Colin Nunn email: colinnunn47@msn.com

Safeguarding: Safeguarding@stoswaldschurch.org.uk

REGULAR CHURCH SERVICES

SUNDAYS

8.00 am Communion (said) every week

10.00 am 1st Sunday of the month:

Family Service

10.00 am Other Sundays: Sung Communion

10.00 am Sunday school in the hall

4.00 pm First Sunday of the month -

Evening Prayer

WEDNESDAYS

11.00 am Communion